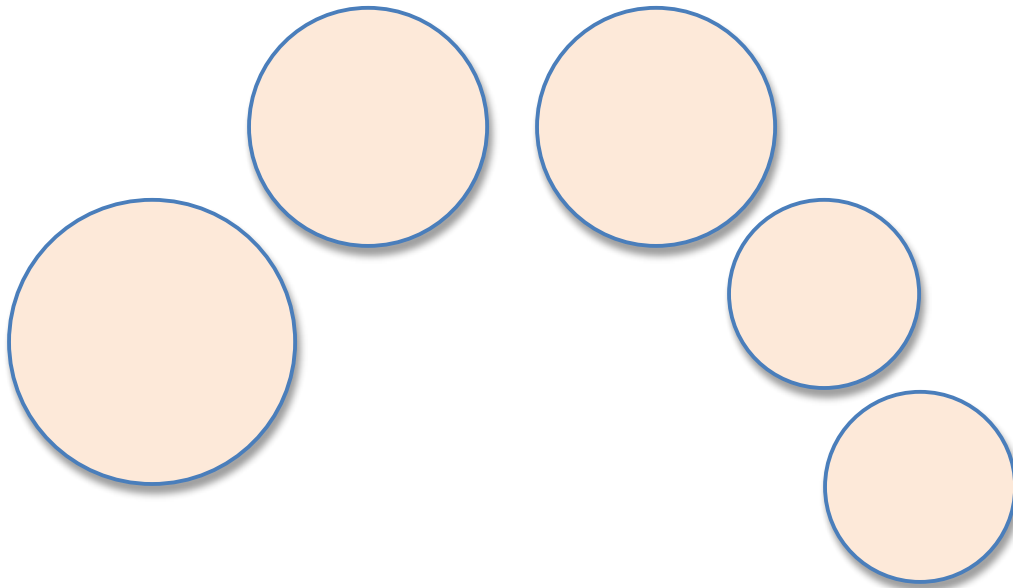


Timpani Sizes and Playing Ranges

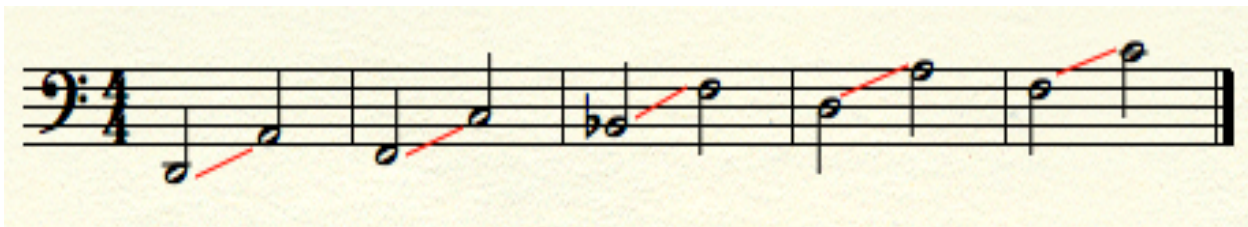


29"/28"

26"/25"

23''

20''



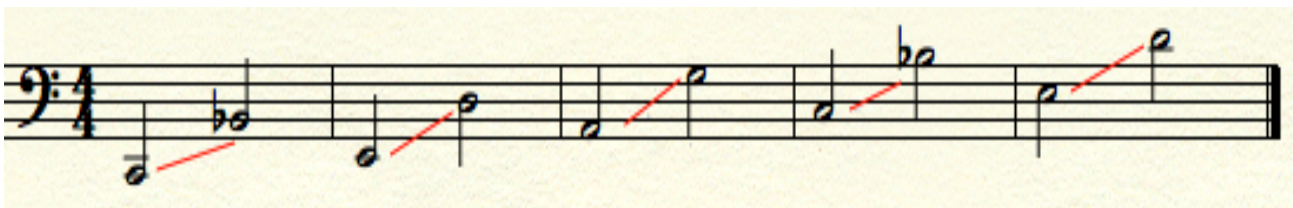
Non-extended collar drums (counterhoop/rim is right next to bowl)

29"/28"

26"/25"

23''

20''



Extended collar drums (counterhoop/rim is about 1" away from bowl)

- If a timpani is “out of range” (usually head will stretch out/ go too low), the pedal will not hold in place & will slip (excluding pedals with locking ratchets)
- Be sure to set the correct range by matching the lowest note shown for each drum
- If the pedal continues to slip, the drumhead may be old & need replacing (head has lost resilience & strength/ like a violin or guitar string going false)
- Heads with any dents, tears, or pitting need to be replaced/ cannot resonate a clear pitch